



# ARES 12i

## VARIABLE CURVATURE ENCLOSURE

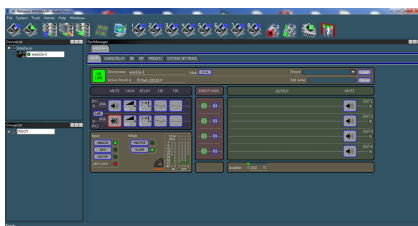
Suitable for a wide range of sound reinforcement applications from medium to large scale concerts & theaters where sound quality is crucial.

ARES 12i is state of the art self-powered 3-ways line array system featuring dual 12" speakers for LF, eight 3" drivers delivering outstanding MF and two 1" HF exit compression drivers coupled to a waveguide that provides smooth top end.

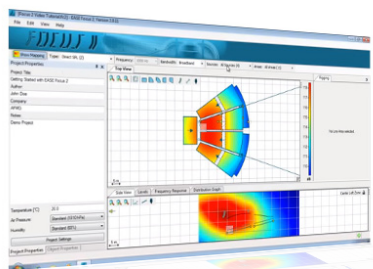
The 4-ways Powersoft built-in amplifier is managed by AUDIOFOCUS DSP that uses SHARKS technology for zero latency filtering IIR and FIR.

ARES 12i operates over the nominal frequency range of 45 Hz to 20 kHz.

Analog and AES input can be used and the system can be controlled by the AF manager software to ensure perfect matching between the system and the audience. Thanks to this, beam steering can be implemented to cancel any form of reflections in theaters and operas.



AF Network Manager



Ease Focus

Technical data	ARES 12
Description	3-way, vented self-powered line array
Usable bandwidth (-3dB)	45 Hz - 20 kHz
Power capacity (Wrms)	1200 W (LF) / 340 W (MF) / 140 W (HF)
Peak power	2500 W (LF) / 2500 W (MF) / 2000 W (HF)
Dispersion (h x v)	110° x 7° (average)
Sensitivity 1W / 1m	100 dB (LF) - 109 dB (MF) - 110dB (HF)
SPL max / 1m	134 dB (LF) - 143 dB (MF) - 143dB (HF)
Rigging angles	Linear & logarithmic & steering positions
Qty of angles	0 to 5°: 0,5° steps; 5 to 10°: 1° steps 10 to 14°: steering 1° steps
Inputs	Analog, AES, Dante (in option)
DSP + treatment	Shark 96 kHz + possibility of beam steering
Interface	Oled display, 24 presets, easy to use
Dimensions (h x w x d)	370 x 1170 x 620 mm (including pins)
Weight	62 kg (bi-amped) // 65,5 kg (active)
Finish	High resistant water based black paint
Material	First grade birch plywood 15 & 24 mm
Compatible	AF management software, DSP network
Shooting tool	Ease Focus and GLL viewer
Accessories	Flying frame, dolly with protective cover, rain cover, coupling frame for ARES 8